

YOUR
PARTNER
FOR FUTURE
WAREHOUSES SOLUTION



**Master
Racks Ltd.**

PRODUCT CATALOGUE

একটি স্বদেশী প্রণয়


 www.masterracksbd.com

Table Of Contents

1	Foreword by Group MD
2-3	What is Pallet Racking
4	Certifications
5	Racks Maintenance and Safety Tips for a Warehouse Racking System
7	Racking Major Components
8	Type of Beams for Heavy Medium and Lite Duty Racking System
9	Components for Automated Storage System
10-11	Various Types of Racking System
12	Selective Pallet Racking System
13	Double Deep Racking System
14	Shuttle Racking System
15	Automated Storage & Retrieval (AS/RS) System
16	Multi-Tier Racking System
17	Longspan Shelving System
18	Mezzanine Racking System
19	Very Narrow Aisle (VNA) Racking System
20	Drive-In Racking System
21	Boltless Shelving System
22	Cantilever Racking System
23	Metal Pallet
24	Personal Locker
25-26	Telescopic Conveyor
27	Mild Steel (M.S.) Hollow Sections
28	Material Handling Equipment (Mhe)
29-30	Upright and Frame Protector Accessories
31-32	Valued Customer

Dear Valued Customers,

We are delighted to present our latest catalog, showcasing our comprehensive range of racking systems. Our dedicated team has worked tirelessly to bring you the highest quality products designed to make your business more efficient, organized, and profitable.

At Master Racks Ltd, we understand that having the right storage solutions is crucial for the success of your business. That's why we offer a wide variety of racking systems, including Shelving racking, pallet racking, cantilever racking, mezzanine flooring, Automated Storage and Retrieval Systems (ASRS) and more. Our products are crafted to maximize your storage space while maintaining the highest levels of safety and durability.

We take pride in our commitment to innovation and excellence. Continuously striving to improve our products and services, we focus on finding new ways to serve you better. Our team of experts will work closely with you to understand your specific needs and deliver customized solutions tailored to your business requirements.

In this catalog, you will find a diverse selection of products designed to meet your storage demands, regardless of the size or complexity of your operations. Whether you manage a small warehouse or a large distribution center, we have the right racking systems to support your business.

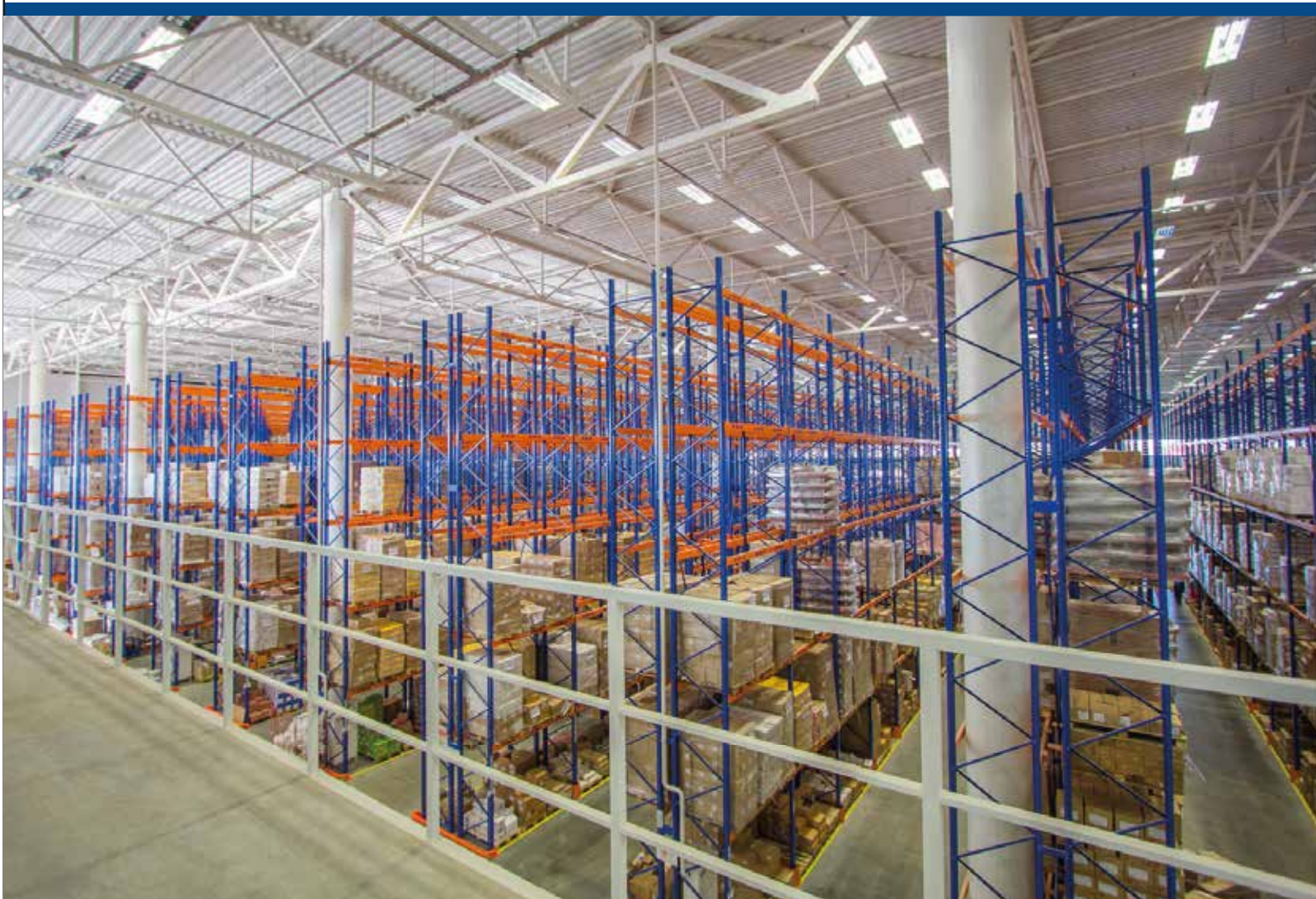
Thank you for choosing Master Racks Ltd as your storage solutions partner. We are committed to providing exceptional customer service and support and look forward to helping you optimize your storage space and enhance productivity.

Sincerely,



Al Mamun Bulbul
Managing Director

WHAT IS PALLET RACKING?



In many developing countries and societies, the issue of land scarcity and the challenge of maximizing space utilization are commonly encountered. One of the most effective and budget-friendly solutions to address this concern is the use of storage equipment, such as pallet racking systems.

Pallet Racking is a material handling storage aid system designed to store palletized or loose items. It is available in various varieties in order to suite for all types of storage needs. The usage of Pallet Racking has allowed for the storage of palletized materials in horizontal rows with multiple levels and with the main aimed increasing ones storage density

To create the ideal pallet racking system, several considerations should be taken into account:

- Desired storage density
- Floor space and building height
- Placement of building doors and columns
- Inventory accessibility
- Inventory rotation
- Item/load size and weight
- Optimal storage design
- Cost of materials and installation

BEFORE INSTALL PALLET RACKING:



AFTER INSTALL PALLET RACKING:



CERTIFICATIONS

Verification Certificate from ISO

Choosing the right racking system is a critical decision that can have long-term positive or negative impacts on your business operations. While budget considerations often play a key role in the selection process, it is essential to prioritize racking systems that are designed and manufactured in compliance with international design and safety standards.

Master Racks Ltd adheres to globally recognized codes of practice, ensuring that all racking solutions meet the highest standards of safety, durability, and performance.

- i. British Standard EN 15512 : 2009 Steel Static Storage System – Adjustable Pallet Racking System (Principles for Structural Design)
- ii. EURO Standard EN 15620 : 2008 Steel Static Storage System – Adjustable Pallet Racking System (Tolerances, Deformations & Clearances)
- iii. British Standard BS5950-1 : 2000 Structural Use of Steelwork in Building – Part 1: Code of Practice for Design – Rolled and Welded Sections



In addition to adhering to international design and safety standards, Master Racks Ltd is committed to maintaining the highest quality benchmarks. This dedication is exemplified by our successful achievement of the ISO 9001:2015 certification. This certification reflects our unwavering commitment to rigorous quality management practices, ensuring consistency, operational efficiency, and a customer-focused approach throughout our organization.

WARRANTY and PRODUCT LIABILITY

We are so confident with our product qualities that we have offered a Manufacturing Defect Warranty and Product Liabilities coverage for our products.

RACKS MAINTENANCE AND SAFETY TIPS FOR A WAREHOUSE RACKING SYSTEM

PROPER INSTALLATION

Engaging professional installers with expertise in industrial racking systems is essential. They ensure the system is assembled, anchored, and aligned correctly, following manufacturer specifications and local building regulations. Professional installation minimizes structural risks, maintains load-bearing integrity, and ensures the system's overall safety and functionality.

PROPER LOAD DISTRIBUTION

Ensuring balanced load distribution across the racking system is vital for stability and accident prevention. Always adhere to the manufacturer's specified weight capacities and avoid overloading individual racks or specific sections to prevent structural strain and damage.

SAFE USAGE PRACTICES

Provide comprehensive staff training on safe and efficient racking system usage. Emphasize proper loading and unloading techniques, encourage the use of correct lifting methods, and stress the importance of handling pallets without excessive force or impact.

REGULAR MAINTENANCE AND INSPECTION

Establish a consistent maintenance routine for your industrial racking system. Regularly inspect key components, including upright frames, beams, connectors, and baseplates, for signs of wear, such as cracks, weld failures, or misalignments. Verify that weight capacities are not exceeded at any level and ensure full compliance with the manufacturer's safety guidelines.

In addition to supplying racking systems for warehouses, Master Racks Ltd also provides professional rack maintenance services to ensure optimal performance and safety. Their skilled team specializes in identifying and addressing potential issues, with a service package that includes labor and the cost of replacement parts when necessary.

SAFETY
LOCK PIN

BOX
BEAM

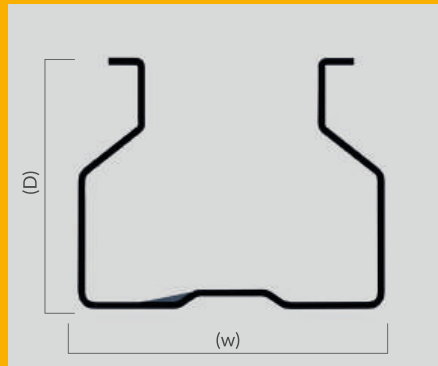
UPRIGHT

HEAVY DUTY
BASE PLATE

RACKING MAJOR COMPONENTS

UPRIGHT

i. For Heavy and Medium Duty Racking System



Dimensions

90mm (W)

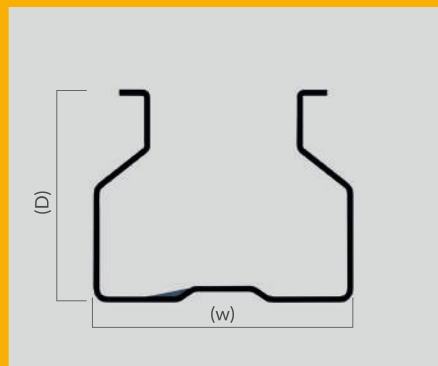
100mm (W)

110mm (W)

120mm (W)

UPRIGHT

ii. For Lite Duty Racking System



Dimensions

70mm (W)

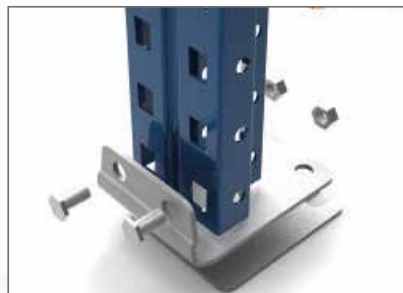
Upright Splice

BASE PLATE

iii. Different Types of Base Plate For Different Load.



Heavy Duty Baseplate



Standard Duty Baseplate



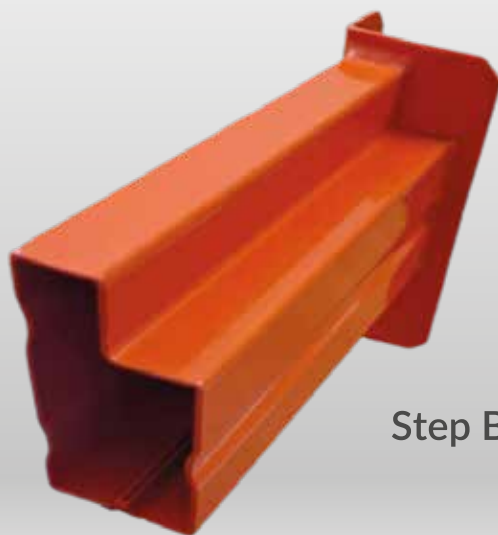
Adjustable Baseplate



Upright with Adjustable Baseplate

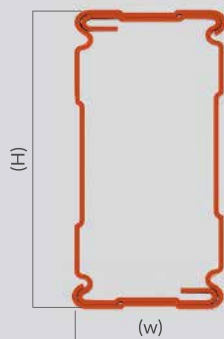


Box Beam

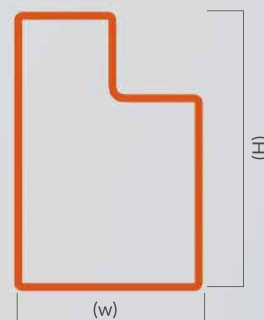


Step Beam

Box Beam

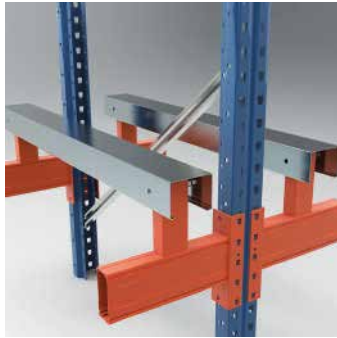


Step Beam

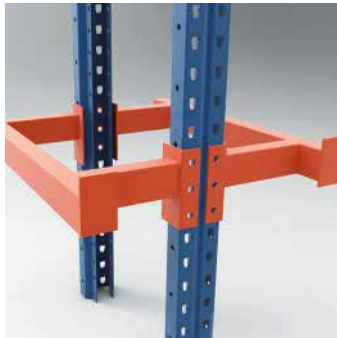


COMPONENTS FOR AUTOMATED STORAGE SYSTEM

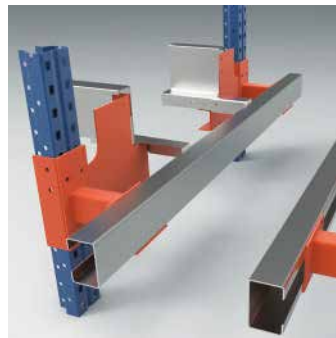
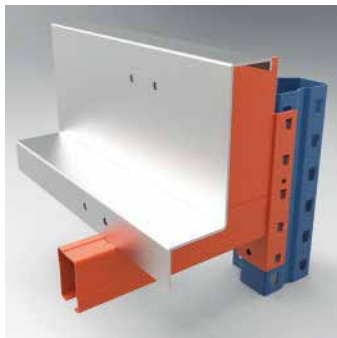
The Industry 4.0 Revolution has significantly transformed the way companies manufacture, distribute, and store their products by integrating advanced technologies for smarter, more efficient operations. Innovations such as the Internet of Things (IoT) and Automation have been seamlessly introduced across various stages of the supply chain, enhancing productivity, precision, and real-time data monitoring wherever applicable.



1) Pallet ASRS - Beams with Top Hat for Single or Double storage capacity.



2) Pallet ASRS - Multi Deep with Shuttle System has been designed to accommodate High Density and low SKUs storage capacities.



3) 4-Ways Shuttle System that suite perfectly for medium-rise warehouses and building for high density storage as well. This system installed rails within the racking system to allow the shuttle cart move horizontally along the racking system for storing and retrieval of stored pallets, containers within the racking system. This has resulted in another level of work efficiency and storage automation into ones operation storage space for goods.

Various Types of Racking System



Selective Pallet Racking System



Double Deep Racking System



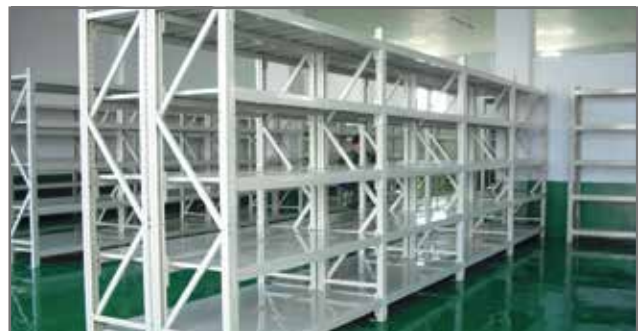
Shuttle Racking System



Automated Storage & Retrieval (AS/RS) System



Multi-tier Racking System



Longspan Shelving System



Mezzanine Racking System



Various Types of Racking System



Very Narrow Aisle (VNA) Racking System



Drive-In Racking System



Boltless Shelving System



Cantilever Racking System

SELECTIVE PALLET RACKING SYSTEM



The most commonly used racking system for storing multiple locations with 100% selectivity is the Selective Pallet Racking (SPR) system. It provides direct access to each pallet, making it ideal for operations requiring quick and efficient retrieval of inventory. This system offers a highly economical and efficient solution for storing and retrieving pallets, as it minimizes handling time and maximizes productivity.

Its straightforward design allows for easy adjustment, making it adaptable to various warehouse layouts and inventory types. Known for its versatility, it can be used in both small-scale storage and large distribution centers. As one of the most cost-effective and scalable options available, Selective Pallet Racking is often recommended for businesses looking to establish or expand their storage capabilities.

ADVANTAGES

- 100% Selectivity: Each pallet is accessible without moving others.
- Multiple Locations Storage: Designed for high-density storage with multiple SKU storage.
- Economical: Affordable and scalable for businesses starting out.
- Efficient Retrieval: Streamlined loading and unloading processes.
- Adaptability: Suitable for a wide range of industries and warehouse sizes.





DOUBLE DEEP RACKING SYSTEM

Double Deep Pallet Racking is a high-density storage system designed to store pallets two positions deep, consisting of two standard selective racking units placed back-to-back. This design reduces the number of access aisles required, increasing overall storage capacity compared to standard selective pallet racking.

To access pallets efficiently, a specialized double deep reach truck with a pantograph or an extension fork attachment is required, ensuring smooth handling of deeper loads.



ADVANTAGES

- **Increased Storage Capacity:** Maximizes warehouse space by reducing the number of aisles while storing more pallets in the same footprint.
- **Cost-Effective:** Offers higher storage density than standard selective racking, making it a budget-friendly option for growing storage needs.
- **Improved Inventory Management:** Ideal for managing multiple pallets of the same SKU, enhancing bulk storage capabilities.
- **Enhanced Space Utilization:** Perfect for warehouses with limited space, as it increases pallet

SHUTTLE RACKING SYSTEM



The Shuttle Rack System is an advanced and highly efficient storage solution that builds upon the principles of the conventional Drive-In Racking System, but with significant improvements in automation and operational efficiency.

The primary distinction lies in the use of a semi-automated shuttle cart that performs the loading and unloading of pallets within the racking structure, minimizing the need for forklifts to enter the lanes.

ADVANTAGES

- **Maximized Storage Density:** The reduced aisle space and deep lane storage enable the warehouse to store a larger volume of pallets, improving overall storage capacity.
- **Increased Efficiency:** The semi-automated shuttle cart significantly speeds up the storage and retrieval process, reducing loading and unloading times compared to conventional racking systems.
- **Space Optimization:** The system reduces aisle requirements and makes better use of vertical and horizontal space, making it ideal for high-density storage facilities.
- **Flexible Inventory Management:** It can operate in both First-In-First-Out (FIFO) and Last-In-First-Out (LIFO) modes, making it suitable for different inventory turnover strategies.
- **Time-Saving Operations:** The shuttle cart's automation speeds up pallet retrieval, allowing for quicker order fulfillment and improved warehouse productivity.





AUTOMATED STORAGE & RETRIEVAL (AS/RS) SYSTEM

The Automated Storage and Retrieval System (AS/RS) is an advanced, high-tech warehousing solution that uses stacker cranes, robotic shuttles, or other automated mechanisms to handle the precise placement and retrieval of goods from designated storage locations.

These systems are designed to streamline inventory management by automating the storage and picking process, minimizing the need for manual labor while enhancing accuracy and efficiency.



HOW AS/RS WORKS

- A stacker crane or robotic shuttle navigates through aisles, guided by software, to access specific storage locations.
- The system retrieves or stores pallets, bins, or totes based on computer-controlled commands.
- AS/RS can be configured for various warehouse types, including unit load systems for larger items and mini load systems for smaller items or bins.

ADVANTAGES

- **Maximized Space Utilization:** AS/RS systems are designed for vertical storage, significantly increasing storage capacity by using the warehouse's full height.
- **Labor Reduction:** Since the system performs most of the material handling, the need for manual labor is greatly minimized, leading to lower labor costs.
- **Operational Efficiency:** AS/RS minimizes the time spent locating and retrieving inventory, which is especially beneficial for high-turnover goods and 24/7 operations.
- **Ideal for Cold Storage:** AS/RS is highly effective in temperature-controlled environments where space efficiency and limited human exposure are critical.

MULTI-TIER RACKING SYSTEM



Multi-Tier Racking System (MTR) is a specialized storage solution that integrates mezzanine platforms constructed using pallet racking or shelving structures.

This innovative system is designed to maximize vertical storage capacity by creating multiple levels of storage, effectively transforming unused vertical space into additional floor space within a warehouse or facility.

By utilizing the full height of a building, MTR systems provide an efficient and cost-effective way to increase storage capacity without expanding the facility's footprint.

ADVANTAGES

- **Maximized Vertical Space:** Utilizes unused overhead space, significantly increasing storage capacity without the need for building expansion.
- **Cost-Effective Expansion:** Provides additional storage floors without major construction costs, making it a budget-friendly alternative to facility expansion.
- **Enhanced Storage Capacity:** Ideal for storing small to medium-sized goods, parts, and inventory across multiple levels, improving storage density.
- **Improved Inventory Organization:** With multiple tiers, goods can be categorized and stored systematically, reducing retrieval times and enhancing operational efficiency.
- **Increased Accessibility:** Designed with integrated staircases, walkways, and guardrails for safe and easy access to all levels.
- **Space Optimization:** Reduces aisle space while increasing storage area, making it ideal for warehouses with limited ground space.

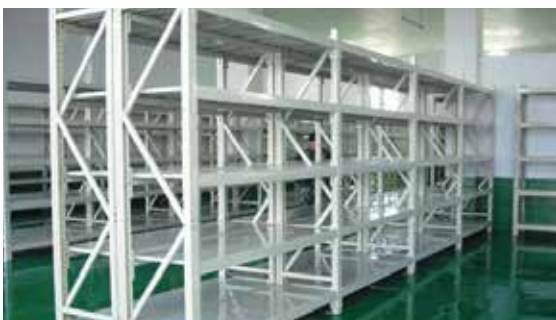




LONGSPAN SHELVING SYSTEM

The Longspan Shelving System is a versatile and durable storage solution specifically designed for medium-duty warehouse applications while maintaining a clean, non-bulky appearance. Its structural design offers superior strength compared to Boltless Shelving Systems while sharing similarities with the more robust Pallet Racking Systems.

The modular design, featuring adjustable shelves and tool-free assembly, allows for easy reconfiguration to suit varying storage needs.



ADVANTAGES

- **Enhanced Load Capacity:** Stronger than boltless shelving, capable of supporting medium to heavy-duty loads, making it ideal for various industries.
- **Space Optimization:** Designed to maximize vertical and horizontal space while maintaining a compact footprint, ideal for warehouses with limited space.
- **Adjustable and Modular:** The shelves are easily adjustable, allowing for customized storage heights to accommodate different product sizes.
- **Durable Construction:** Built from high-quality steel with reinforced beams, ensuring long-term durability and stability.
- **Cost-Effective:** Provides a balance of strength and affordability, making it an economical choice for medium-duty storage needs.
- **Customizable Design:** Available in various heights, widths, and shelf depths to meet diverse storage requirements.
- **Suitable for Mezzanine Integration:** Can be incorporated into a multi-tier racking system for warehouses needing to maximize floor space.

FABRIC RELAX RACK

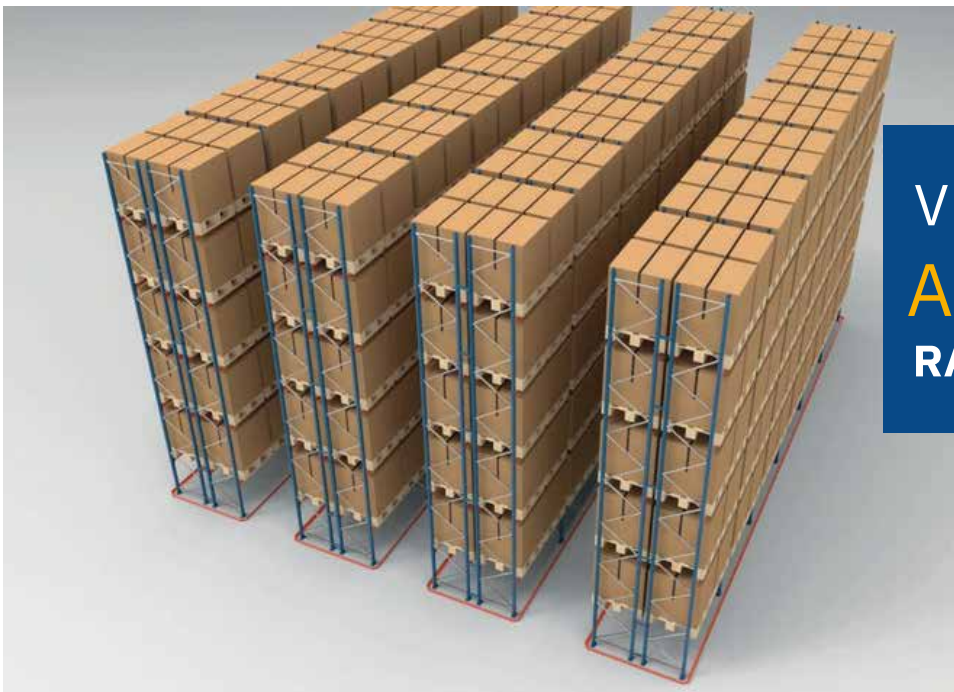


Storing fabric within a stockroom requires a specific style of shelving that provides enough depth to cope with long rolls of cloth also material. Fabric Roll Storage Racks has a close relation to carpet racking. This type of storage system is build from our standard heavy duty components. To achieve the require shelf depth two shelving bays are position one behind the other.

ADVANTAGES

- The rolls are easy to use, and also can store long fabric rolls.
- It also reduces the amount of used floor space
- The rolls can be easily load onto the pallet. Therefore, it saves time and prevents any injuries to workers.
- Textile roll storage has to be completed without damaging the roll materials.
- Simple design and operation, as well as easy-to-use controls.
- No need for employees to walk, lift, bend or drag materials across your warehouse.
- Minimal effort for roll changes or adjustments, allowing your team to operate efficiently and quickly when filling complex or large orders.





VERY NARROW AISLE (VNA) RACKING SYSTEM

Very Narrow Aisle (VNA) Racking System is a high-density storage solution designed to maximize vertical and horizontal space efficiency while maintaining 100% selectivity of pallets. This system utilizes extremely narrow aisles compared to standard racking, allowing for a higher concentration of storage locations within the same warehouse footprint.

Pallets are stored in tall racks and accessed using a specialized Turret Truck (VNA Truck), which operates on a floor guidance system using either wire induction or mechanical rails for precise navigation and stability.

These trucks can lift pallets up to 14 meters (46 feet) high, making this system ideal for warehouses with significant vertical capacity. The VNA design can save up to 50% more space compared to standard reach truck systems, making it a highly efficient choice for modern storage needs.



ADVANTAGES

- **Maximized Storage Capacity:** The reduced aisle width increases storage density, optimizing the use of both vertical and horizontal space.
- **100% Selectivity:** Despite the high density, every pallet remains directly accessible, ensuring efficient inventory management.
- **Space Efficiency:** Reduces aisle widths by up to 50% compared to standard reach truck setups, allowing more pallets to be stored within the same area.
- **Ideal for Tall Warehouses:** With a height capacity of up to 14 meters, it fully utilizes vertical space, making it perfect for warehouses with high ceilings.
- **Enhanced Safety and Precision:** The guided system reduces the risk of operator error and damage to both the racking structure and stored goods.

DRIVE-IN RACKING SYSTEM



The Drive-In Racking System is a highly preferred alternative to conventional block stacking, especially when pallets cannot be directly stacked on top of each other due to product sensitivity or structural limitations. This system is designed to maximize warehouse storage capacity by allowing pallets to be stored in deep lanes with fewer working aisles, significantly increasing space utilization.

The Drive-In Racking setup works by enabling forklifts to enter the racking lanes to place and retrieve pallets directly. It operates on a Last-In-First-Out (LIFO) inventory system, making it ideal for the storage of homogeneous products that are not time- or date-sensitive.

ADVANTAGES

- **Maximized Storage Capacity:** By reducing the number of aisles and increasing the depth of storage, this system offers up to 80% more storage space than conventional racking methods.
- **Space Optimization:** Drive-In Racking makes efficient use of both vertical and horizontal space, making it perfect for warehouses with high-density storage requirements.
- **Cost-Effective:** Since it requires fewer aisles and supports bulk storage, it offers significant cost savings on space and construction costs.
- **Ideal for Bulk Storage:** Best suited for storing large quantities of the same SKU, ensuring effective storage of uniform products.
- **Reduced Handling Time:** Forklifts can load and unload directly into the storage lanes, minimizing travel distance and speeding up operations.





BOLTLESS SHELVING SYSTEM

For light-duty storage needs where the load per level is less than 400 kg, a Boltless Shelving System is the ideal choice. This shelving system features a bolt-free connection design, making it easy to install, highly versatile, and adaptable to a wide range of applications.

Its ability to be customized, mixed, and matched according to individual requirements makes it a practical and efficient storage solution for businesses and personal use alike.



EASY ASSEMBLY AND INSTALLATION:

- The bolt-free design allows for quick and hassle-free installation without the need for specialized tools or technical expertise.
- Components easily snap or slot into place, minimizing setup time and effort.



CUSTOMIZABLE AND FLEXIBLE:

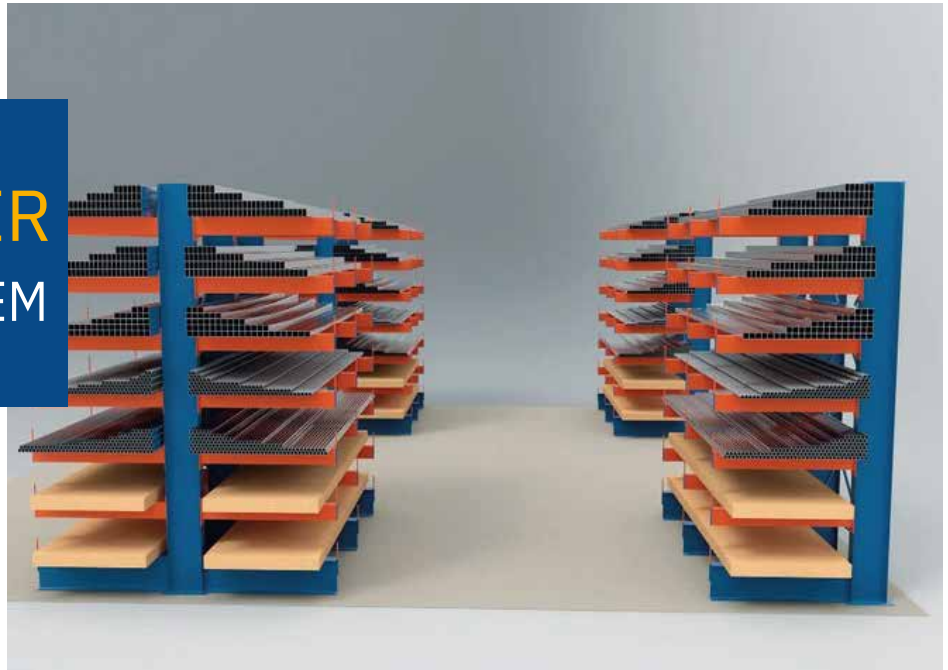
- Shelving heights, configurations, and levels can be adjusted to meet specific storage needs.
- Offers the ability to mix and match components to create a tailored solution that maximizes available space.



ADAPTABLE ACROSS INDUSTRIES:

- Height and capacity limits are the biggest concern.
- Poor choice for high volume application.
- Cannot use forklift or any other machine since all the products need to be handpicked.

CANTILEVER RACKING SYSTEM



Using a Cantilever rack system to store and retrieve long items is best. It is designed to manage loads of varying length and proportion; and to be completely accessible from the front without any horizontal restrictions like the conventional pallet racking system



ADVANTAGES

- **Versatile Storage:** Perfect for long items such as pipes, lumber, steel bars, or furniture. The absence of vertical uprights in the front allows you to store items of any length without limitation.
- **Efficient Space Utilization:** By utilizing vertical space, these racks maximize your storage capacity without crowding the floor area, making them ideal for warehouses and workshops.
- **Customizable Configuration:** Cantilever racks can be tailored to accommodate varying load sizes and weights, with adjustable arms and robust frames designed to support heavy-duty items.
- **Durability and Strength:** Built with high-strength materials, cantilever racks are designed to support heavy loads safely, ensuring long-term reliability.
- **Cost-Effectiveness:** By offering better storage density and reducing handling times, cantilever systems help optimize operational efficiency and lower labor costs.



METAL PALLET

The metal pallet is ideal for use in warehouse storage because they are stackable, and can hold almost any product. Whatever your needs may be, our revolutionary metal pallets will meet your product demands, and as our illustrations will show, they will outlast any other pallet on the market today.

Metal pallets are designed to be a robust and durable option for industries with specialist materials handling needs. Using steel to construct pallets means that they are much stronger than regular pallets, they are easy to sterilize, and do not rot or carry pests.

Advantages

- High load capacity
- Longer lifespan
- Easy to stack
- Corrosion and weather resistant
- Customized design & size



PERSONAL LOCKER



Locker is the best solution to increase the security for employee, worker and visitors to keep their personal stuff. Its mostly used in different industries such as Garments & Textile, Pharmaceuticals, Food & Beverage etc. also used in Office, Hospital, University and Police Station. In any environment, workplace changing rooms are notoriously disorganized. Our work lockers have been developed to bring structure and management to your space.



Advantages

- Privacy & security
- Health & Safety
- Item Organizations
- Save storage space
- Basic Features:

Dimensions: L-12/15*D-12/15*H-72 inches

Tier: single-tier (full height), two-tier, three-tier, etc.

Material: Steel

Color: Any Color (Powder Coated)

Locking Options: Flush locks, Cam locks, or locks incorporated into a rotating handle

Note: Dimensions are customizable and Tier, Color & Locking options depends on the customer requirement.



TELESCOPIC CONVEYOR

This conveyor gives you precise control at the shipping dock by extending automated loading all the way to the nose of the truck trailer. This allows faster, more ergonomic loading and unloading at busy shipping and receiving operations, and ties directly into powered conveyor systems without extensive integration. It stores out of the way under fixed conveyors when it's not in use, so you'll have clear working space for staging, loading, etc. Built tough for long life, with heavy duty steel construction and reinforced belt. Controls are convenient and easy to use.

A telescopic conveyor is an effective solution in package handling applications. After extension, it minimizes the need of manual handling of products by operators. When needed, the dropping or reception spot can be shifted directly to the operator's side by means of simple joystick movement.

BELT CONVEYOR

Belt Conveyor systems are the most versatile and simplest material handling systems. They work with two or more pulleys driving an endless loop belt. The loop then moves a product from Point A to Point B on the belt. We use belts made from fabric or rubber. Belt conveyors are commonly used in both manufacturing and distribution facilities.

A belt conveyor system can be implemented with a very economical cost per foot of the conveyor for many warehouse and industrial applications. Because it includes just one motor and a simple belt system they are quite simple. Hence they're often one of the first productivity improvement purchases that a growing company will make. Although there are many belt conveyor types, the simplest style is known as a slider bed style. When linked together with sensors and other automation equipment a conveyor belt system can greatly enhance productivity.



Gravity spiral is a device that enables cargo travelling between different levels of transport lines. In the spiral, cargo is moved by gravity. The appropriate inclination of the characteristic structure ensures safe transport and maintaining proper trajectory of loads without the need of controlling it constantly.

A gravity spiral is a vertical transport solution which does not require drive. The loads are transported using gravity. An appropriate inclination of the characteristic structure ensures safe transport and maintaining proper trajectory of loads without the need of controlling it constantly



Spiral Conveyor

Advantages of Spiral Conveyor System

No power consumption

This conveyor is not driven by motor. The products will slip down with friction between roller to complete the declined transportation. Without power consumption and environment friendly.

Spacing saving

Overhead space is well used by vertical transportation, compact structure save valuable floor space for other processing/producing line.

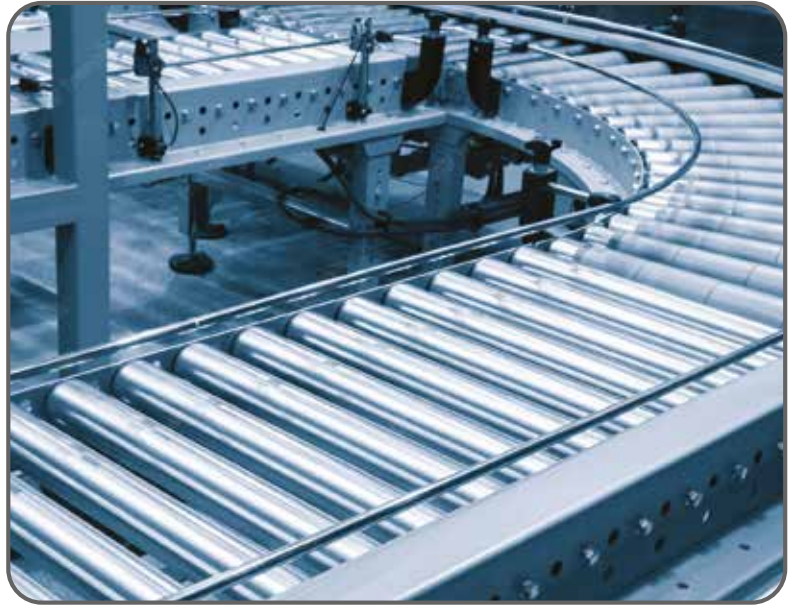
Reliable load capacity

No matter it is light or heavy, different cartons and other containers can be carried by gravity roller spiral conveyor easily.

Flexible customization

Both width of track and number of layers are customized. Multi-entry transportation can be achieved by installing sensors and other electronic control management, and there are incomparable advantages for high-rise buildings. Extra tracks can be also added to improve throughput.

- ▼ Spiral Up & Down Conveyors with electric motor driven technology
- ▼ Modular Design as per your demand
- ▼ Overlapping Slats
- ▼ Small Footprint
- ▼ Horizontal Entry and Exit
- ▼ Built in Protection
- ▼ One Drive
- ▼ Easy to Install
- ▼ Low Noise
- ▼ Easy to Field Modify
- ▼ High Throughput
- ▼ Garments and Textile industry
- ▼ Food, Bakery industry
- ▼ Finished goods warehouse
- ▼ Raw materials store
- ▼ Small parts industry
- ▼ Pharmaceuticals store



Roller Conveyor

Advantages of Roller Conveyor System

Unsustainable resources have always played a vital role in industry and commerce at present. When it comes to portray an example of these resources supported with optimal technology, then, roller conveyor proves to be the perfect example. This conveyor system is intended at serving the utility in a cost-effective and flexible manner. Be it food outlet, packaging warehouse, goods transportation organization or any other conveying work station, the roller conveyor system has proved its efficiency and effectiveness. Let us understand the various benefits of conveyor roller:

Effective manufacture & design

Easy maintenance and operation

Suitable for transportation business

Other advantages



MILD STEEL (M.S.) HOLLOW SECTIONS

These hollow sections are manufactured with high-grade raw material and leading technology. Offered hollow sections are available in different specifications as per the various needs of the clients. Being the emerging leader of Industrial Rack Manufacturing, we completely value our responsibility and work hard to supply only supreme quality hollow sections. These are used in Construction, Industrial, Fabrication, and Mechanical Industries.

The offered product line is manufactured under the close supervision of our experienced professionals. Besides, we assure that the consignments are timely delivered to the client's destinations. MRF has equipped with requisite technology as well as bucked up the ability to provide best-quality M.S. Hollow Box and Round Pipe and comprehensive support. M.S. Seamless Square, Rectangular and Round pipes are fabricated from high-grade mild steel and with the help of hot and cold rolling mechanisms.



M.S. Round Hollow Pipe



M.S. Rectangular Hollow Box

MATERIAL HANDLING EQUIPMENT (MHE)



Very Narrow Aisle (VNA)



Reach Truck



Powered Stacker

Forklift and Reach Truck are excellent solutions for handling heavy load within a short period of time.

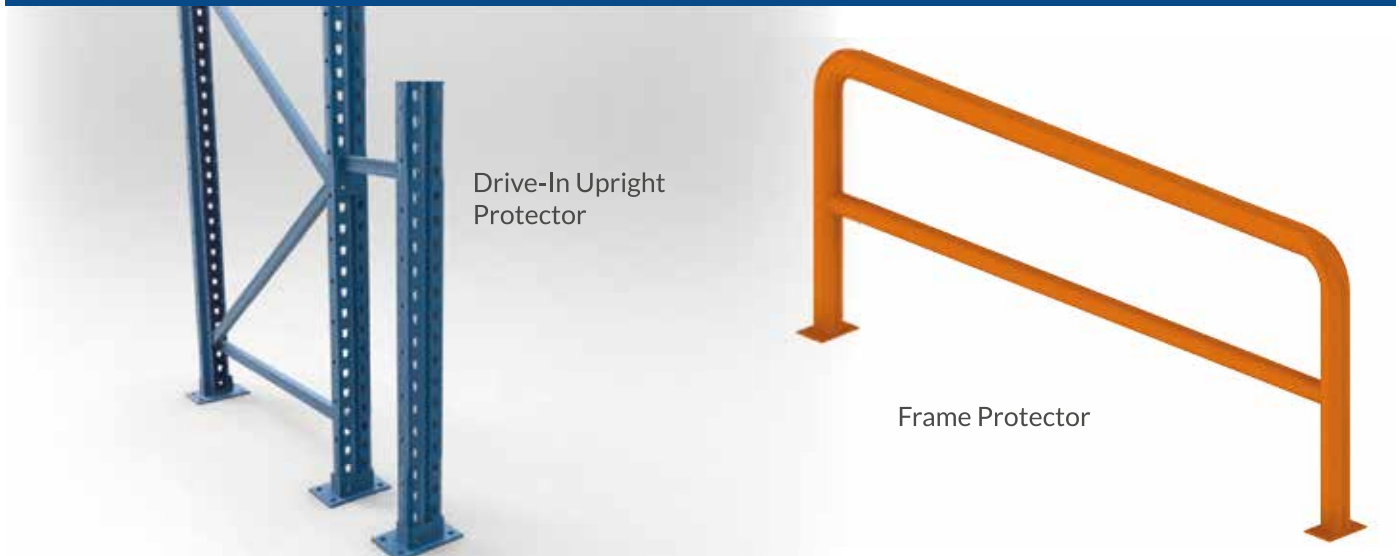


Movable Scissor Lift

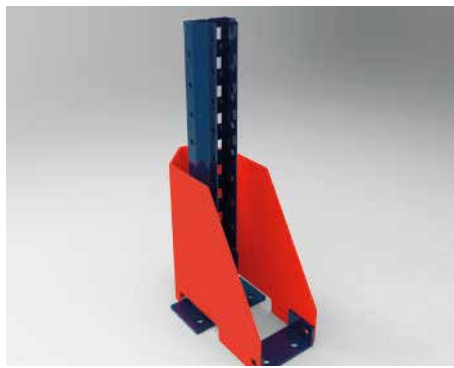


Forklift

Upright and Frame Protector Accessories



Corner Protector



Column Guard

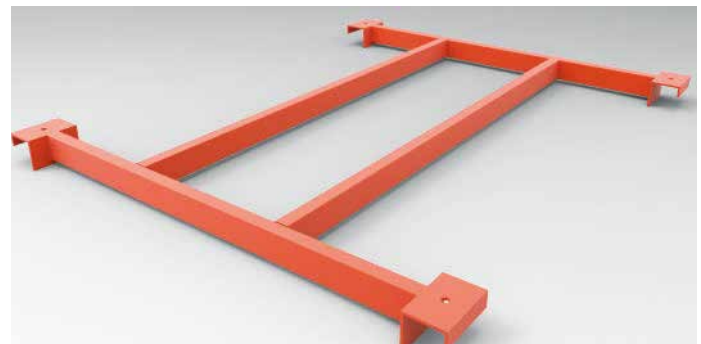


Floor Channel Guide with Bull Nose

Pallet and Shelves Decking Support Accessories



Pallet Support Bar



H-Type Pallet Support Bar

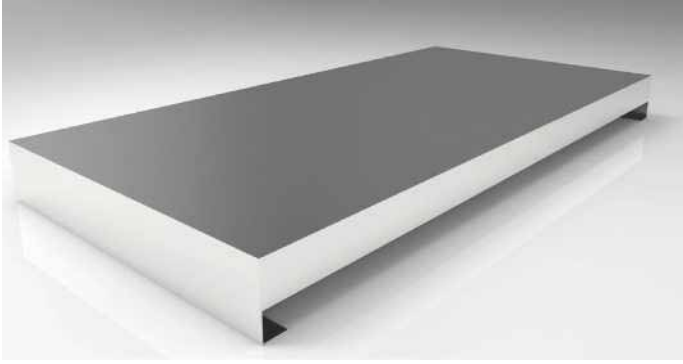


Pallet Back Stopper



Center Support

(1) Shelf Decking Type



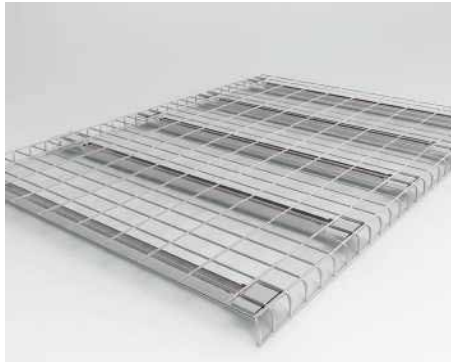
(a) Flush Steel Decking Panel



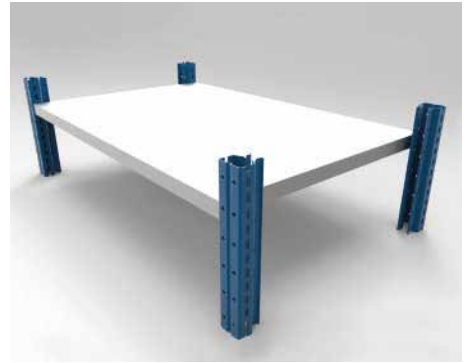
(b) Flush Steel Decking Panel with Beam



(d) Plywood Decking with Plywood Retainer



(d) Wire Mesh Decking

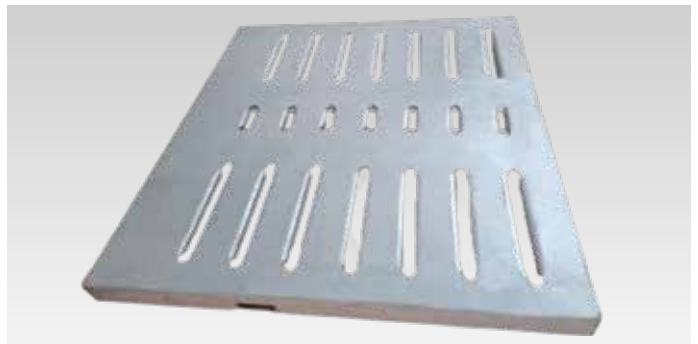


(e) LS500 with Steel Shelf

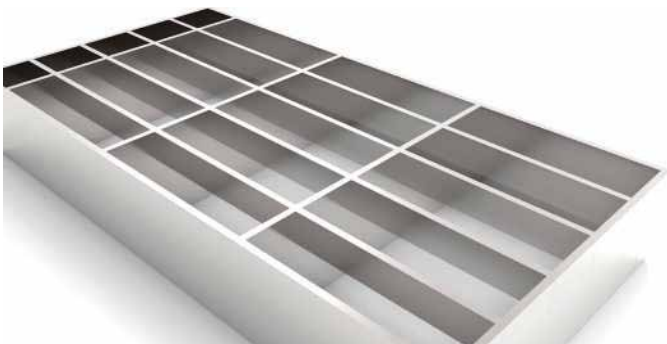
(2) Floor Decking Type



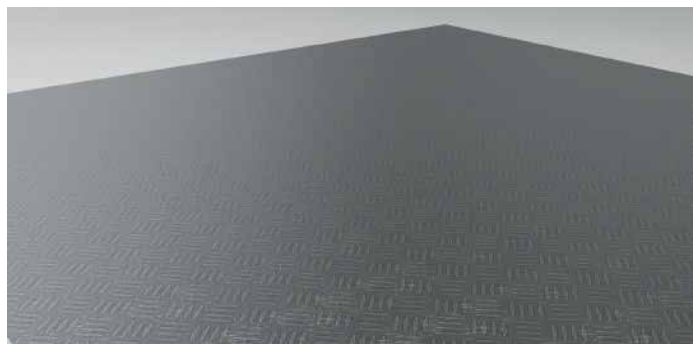
(a) Interlock Perforated Panel (IPP)



(b) Mesh Grating Type A



(c) Mesh Grating Type B



(d) Chequered Plate

OUR VALUED CLIENTS



আবুল খায়ের গ্রুপ



NOMAN
G R O U P



KNIT CONCERN GROUP





Find Us

Corporate Head Office:

- 📍 Suite B-3, House 26, Alaol Avenue, Sector 06, Uttara, Dhaka-1230 Bangladesh.
- ☎ +880 1321 201 444, +880 1313 019 160
- ✉ contact@masterracksbd.com
- 🌐 <https://masterracksbd.com/>

Chattagram Office:

- 📍 House 41/A, Road 1, CDA R/A North Kattali, Akbarshah, Chattagram, Bangladesh.
- ☎ +880 1670 482 082, +880 1313 019 163
- ✉ tool_mstr@yahoo.com
- 🌐 <https://masterracksbd.com/>

Factory

- 📍 Kanchpur, Sonargaon, Narayangonj, Bangladesh
- ☎ +880 1686 399 769, +880 1318 559 928
- ✉ tool_mstr@yahoo.com
- 🌐 <https://masterracksbd.com/>